



Ms. Anne Selby

Compleat™ Arashi Shibori Wrapping Machine by Anne Selby Ltd., UK

Compleat™ Arashi Shibori Wrapping Machine

Anne Selby of Anne Selby Ltd., UK, developed Compleat™ Arashi Shibori Wrapping Machine, an electrically driven “wrapping” machine that facilitates Arashi Shibori pleating of fabric. Arashi Shibori is a Japanese technique of over wrapping fabric on a pole with string, and compressing it. The Compleat™ Arashi Shibori Wrapping Machine takes physical strain out of the wrapping process without removing any of the creative opportunities. The integrated system means that three stages in the process can be completed with the use of the machine; the wrapping/pleating; any overdyeing to introduce color along the peaks of the pleats (this is unique to Arashi Shibori pleating), and the steam-setting of the dyes and pleats.

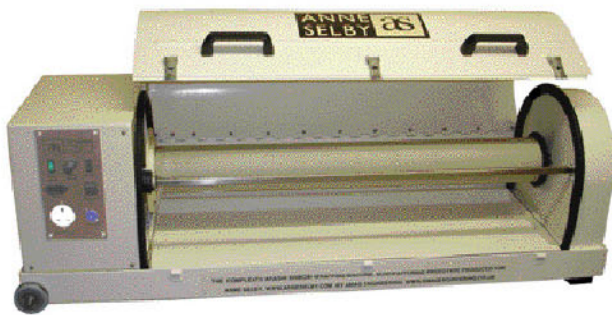
Concertina Stole – Arashi Shibori

Anne Selby has developed the traditional technique of Arashi Shibori to new limits with this multi-layered silk Concertina Stole, which is mesmerizing to look at and luxurious to wear. Using her invention, the Compleat™ Arashi Shibori Wrapping Machine, she has pleated and dyed many layers of silk and silk organza, 5 m in length into a wrap that she has named “Concertina Stole” after the dynamic behaviour of the piece.



Anne Selby Collaborations

Anne Selby is keen to support new ventures anywhere in the world that wish to develop competency in the use of shibori and devore techniques. She offers public workshops as well as in-house courses to assist individuals and groups learn these techniques. If you are a member of a group which might be interested in developing the capability to make and sell top-quality silk accessories, perhaps with public funding, please contact Anne to discuss your needs.



Compleat™ Arashi Shibori Wrapping Machine

Ms. Anne Selby won the IMB Innovation Award

Ms. Anne Selby received the first “Students & Young Professionals” category in the 2nd IMB Innovation Awards at IMB 2009, Köln, Germany for her Compleat™ Arashi Shibori Wrapping Machine. The wrapping machine impressed the jury because it is able to produce uniquely folded and dyed materials - a production process which currently is only possible if it's done manually and can in the future be automated through the use of a simple machine.

Thoughts on winning the innovation award at IMB by Ms. Anne Selby

“When I originally developed a wrapping machine, it was for my own practice as a shibori artist. I had won an award through my university in Bath, England, to make the first prototype, and once this had been completed, it seemed obvious to continue and make a second, improved prototype. This is the one that went to IMB in Cologne - and which received such interest.

The process of wrapping and Arashi Shibori is a very exciting one - and one that the embroidery world seems very interested in. Pleating is timeless; but only with this work (and the help of Compleat™) can you make pleats with contrasting dye lines along the peaks. They create such a strong visual effect.

To win the award at IMB has been wonderful; it is not an easy process, developing a machine, considering all the design issues and safety requirements etc. I have met so many people who have encouraged me to continue getting Compleat™ to market, and also a fraternity of other passionate pleaters, from India to South Africa to South America! I hope that by creating Compleat™ I will be making Arashi Shibori more accessible and well known to designers, textile artists, manufacturers and fashion schools worldwide.”